

记录您的型号:

Record your model number: \_\_\_\_\_

1616700-T2

**小心:** 存在人身伤害或产品损坏风险。如果处理不慎, 产品可能会破裂、碎裂或造成人身伤害。寻求帮助来提起产品。

**重要信息!** 向台面制造商提供您的台盆型号。使用台盆随附的开孔模板, 或联系客户服务部并提供您的型号以获取最新的开孔模板。

使用台盆随附的紧固件和夹具。请勿使用粘合剂或粘性密封剂来安装产品。

此台盆可以安装在大理石台面上或木制台面上。若要安装在厚度超过 1 英寸 (25 毫米) 的木制台面上, 请订购紧固件和夹具配件包 52047。不建议将厚度小于 1 英寸 (25 毫米) 的木制台面与此台盆一起使用。

您的产品可能与图示不同。安装步骤相同。

请遵守当地管路安装及建筑条例。

1A. 100% 密封硅胶 (未随附)

1B. 环氧树脂粘合剂 A 和 B (未随附)

2A. 检查龙头与台盆之间的间隙。

2B. 检查台盆与浴室柜之间的间隙。

2C. 检查排水管和柜子间隙。

3A. 沿着模板的开孔切割模板。

4A. 将模板放在台面上, 并用铅笔描出开孔。检查台盆外缘与成品墙之间的间隙是否符合规定。去掉模板。

5A. 在所绘线的内侧钻定位孔。

5B. 沿所绘线的内边缘对台面进行切割。

6A. 按照制造商的说明, 安装排水管和水龙头。

7A. 清洁台盆边缘和台面下侧。

**注:** 如果将台盆安装在厚度超过 1 英寸 (25 毫米) 的木制台面上, 请执行步骤 12。

8A. 取等量的环氧树脂粘合剂 A 和 B, 进行充分混合。

9A. 将螺丝插入木块的中心孔中。

9B. 将混合后的密封剂涂抹在塑料块上。

10A. 从台面下方开始, 将塑料块安装在台面底部。

10B. 立即擦掉多余的环氧树脂粘合剂。按照制造商的说明使环氧树脂粘合剂固化。

11A. 用随附的螺丝、垫圈和螺母松地安装夹具。

12A. 用于将台盆安装在厚度超过 1 英寸 (25 毫米) 的木制台面上: 用螺丝松地安装夹具。

13A. 在台盆上涂抹 100% 密封硅胶。

14A. 用于将台盆安装在大理石台面上: 将台盆放在开孔下方。旋转边缘上的每个夹具。用螺丝、垫圈和螺母拧紧夹具。请勿过度拧紧。

15A. 用于将台盆安装在厚度超过 1 英寸 (25 毫米) 的木制台面上: 将台盆放在开孔下方。旋转边缘上的每个夹具。用螺丝拧紧夹具。请勿过度拧紧。

16A. 立即擦掉多余的 100% 密封硅胶。按照制造商的说明, 使 100% 密封硅胶固化。

18A. 放水并检查有无漏水。

**需要帮助?** 请联系我们的客户服务中心。

• 中国大陆: +(86) 800-820-2628, +(86) 400-820-2628

• 保养和清洁: [kohler.com.cn/support/care-and-cleaning/](http://kohler.com.cn/support/care-and-cleaning/)

本产品可在科勒®卫浴产品的 3 年有效质保范围内, 详见所附的《合格证》。

**CAUTION: Risk of personal injury or product damage.** Product can break, chip, or cause injury if handled carelessly. Get help lifting the product.

**IMPORTANT!** Provide your countertop manufacturer with your bathroom sink model number. Use the cut-out template provided with your bathroom sink or contact Customer Service with your model number for the latest cut-out template.

Use the fasteners and the clamps provided with the bathroom sink. DO NOT use adhesives or adhesive sealants to install the product.

This bathroom sink can be installed on a marble countertop or on a wooden countertop. For installation on a wooden countertop with thickness more than 1" (25 mm), order fastener and clamp accessory pack 52047. Wooden countertop with thickness less than 1" (25 mm) is not recommended to use with this bathroom sink.

Your product may appear different than the one illustrated. The installation procedure is the same.

Follow all local plumbing and building codes.

1A. 100% Silicone Sealant (not supplied)

1B. Epoxy Resin Adhesive A and B (not supplied)

2A. Verify the faucet and bathroom sink clearance.

2B. Verify the bathroom sink and cabinet clearance.

2C. Verify the drain and cabinet clearance.

3A. Cut the template along the cut-out hole of the template.

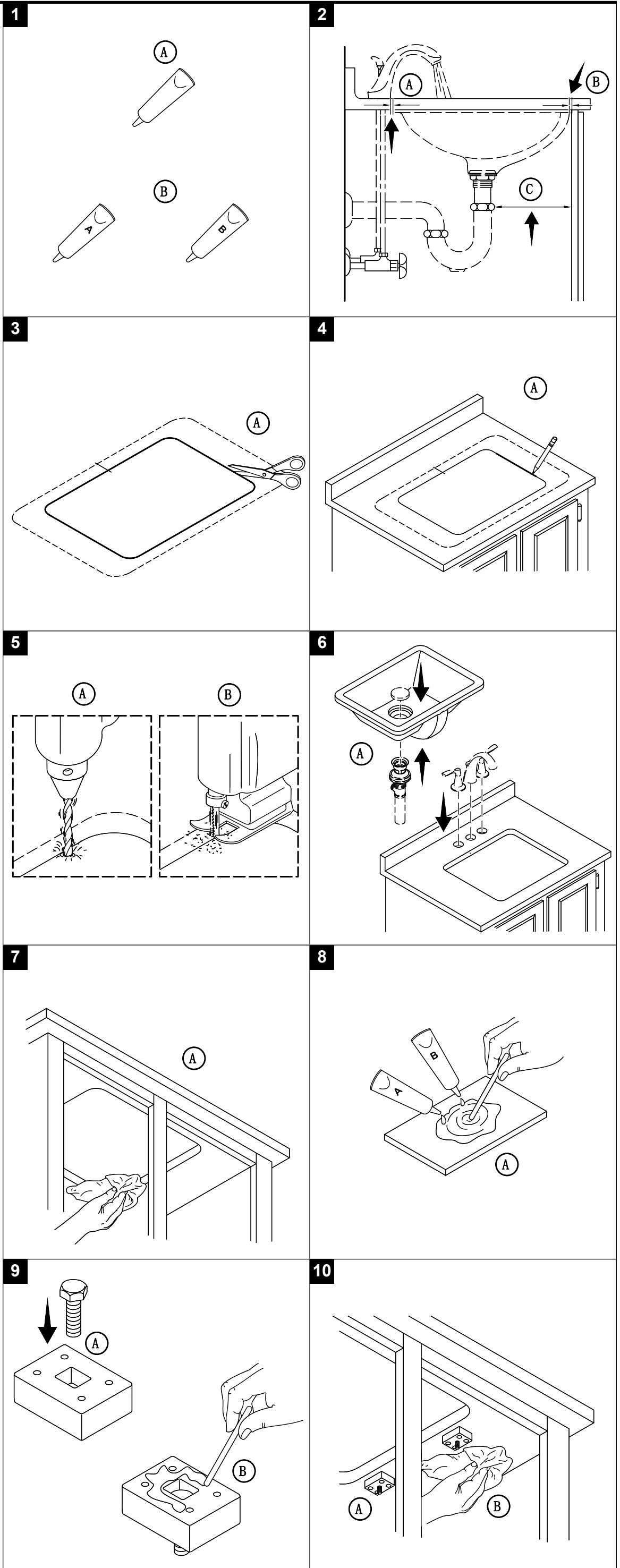
4A. Position the template on the countertop and trace the cut-out hole with a pencil. Verify that the clearance is as specified between the outer rim of the bathroom sink and the finished wall. Remove the template.

5A. Drill a pilot hole on the inside of the traced line.

5B. Cut the countertop along the inside edge of the traced line.

6A. Install the drain and faucet following the manufacturer's instructions.

7A. Clean the bathroom sink rim and the underside of the countertop.



**NOTE:** If installing the bathroom sink on a wooden countertop with thickness more than 1" (25 mm), proceed to Step 12.

**8A.** Take an equal quantity of epoxy resin adhesive A and B and mix thoroughly.

**9A.** Insert the screws into the center hole of the blocks.

**9B.** Apply the mixed sealant onto the blocks.

**10A.** From underneath the countertop, install the blocks on the bottom of the countertop.

**10B.** Immediately wipe away excess epoxy resin adhesive. Allow the epoxy resin adhesive to cure following the manufacturer's instructions.

**11A.** Loosely install the clamps with the provided screws, washers, and nuts.

**12A. For installation on a wooden countertop with thickness more than 1" (25 mm):** Loosely install the clamps with the screws.

**13A.** Apply the 100% silicone sealant on the bathroom sink.

**14A. For installation on a marble countertop:** Hold the bathroom sink under the cut-out. Rotate each clamp over the rim. Tighten the clamps with the screws, washers, and nuts. **Do not overtighten.**

**15A. For installation on a wooden countertop with thickness more than 1" (25 mm):** Hold the bathroom sink under the cut-out. Rotate each clamp over the rim. Tighten the clamps with the screws. **Do not overtighten.**

**16A.** Immediately wipe away excess 100% silicone sealant. Allow the 100% silicone sealant to cure following the manufacturer's instructions.

**18A.** Run water and check for leaks.

**Need help?** Contact our Customer Care Center.

• Mainland China: +(86) 800-820-2628, +(86) 400-820-2628

• **Care and cleaning:** [kohler.com.cn/support/care-and-cleaning/](http://kohler.com.cn/support/care-and-cleaning/)

This product is covered under the **Three-Year Limited Warranty for KOHLER® Plumbing Products**, found in the packed Compliance Certification.

